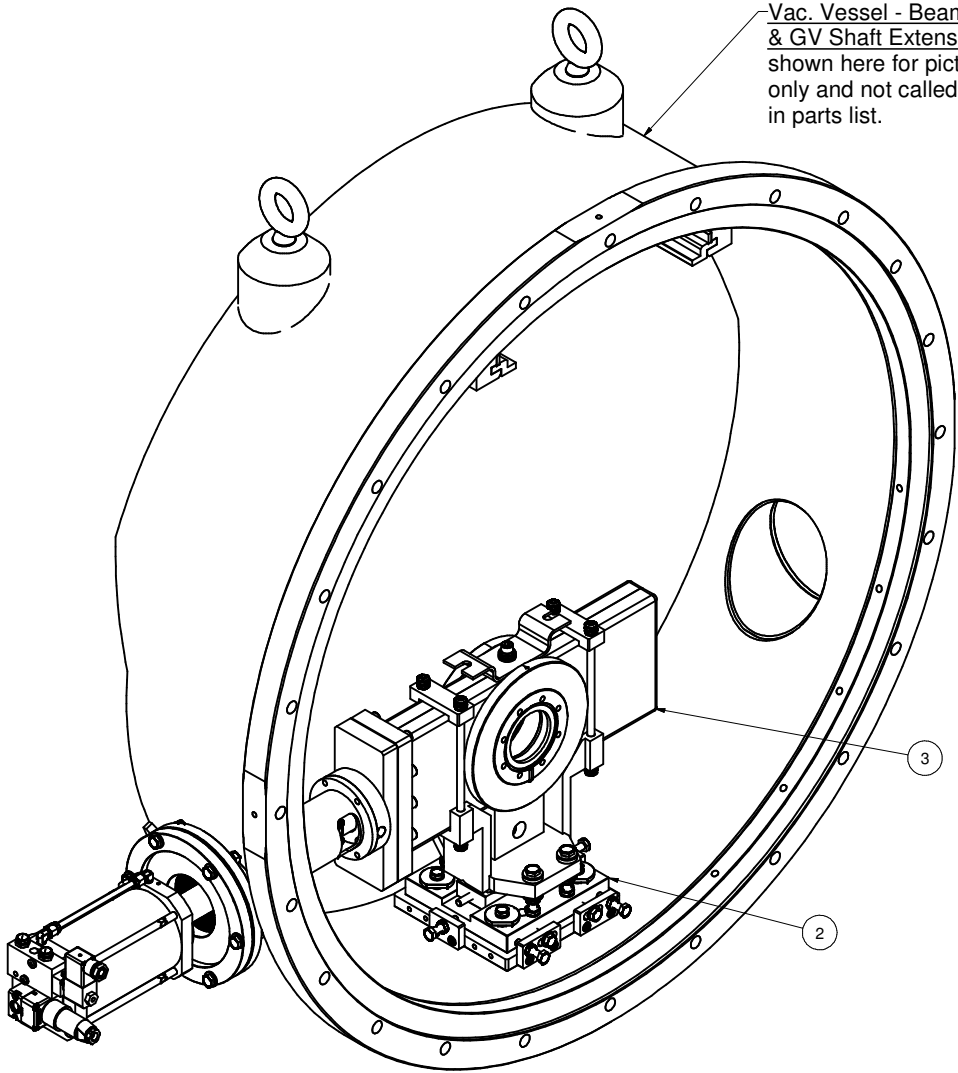
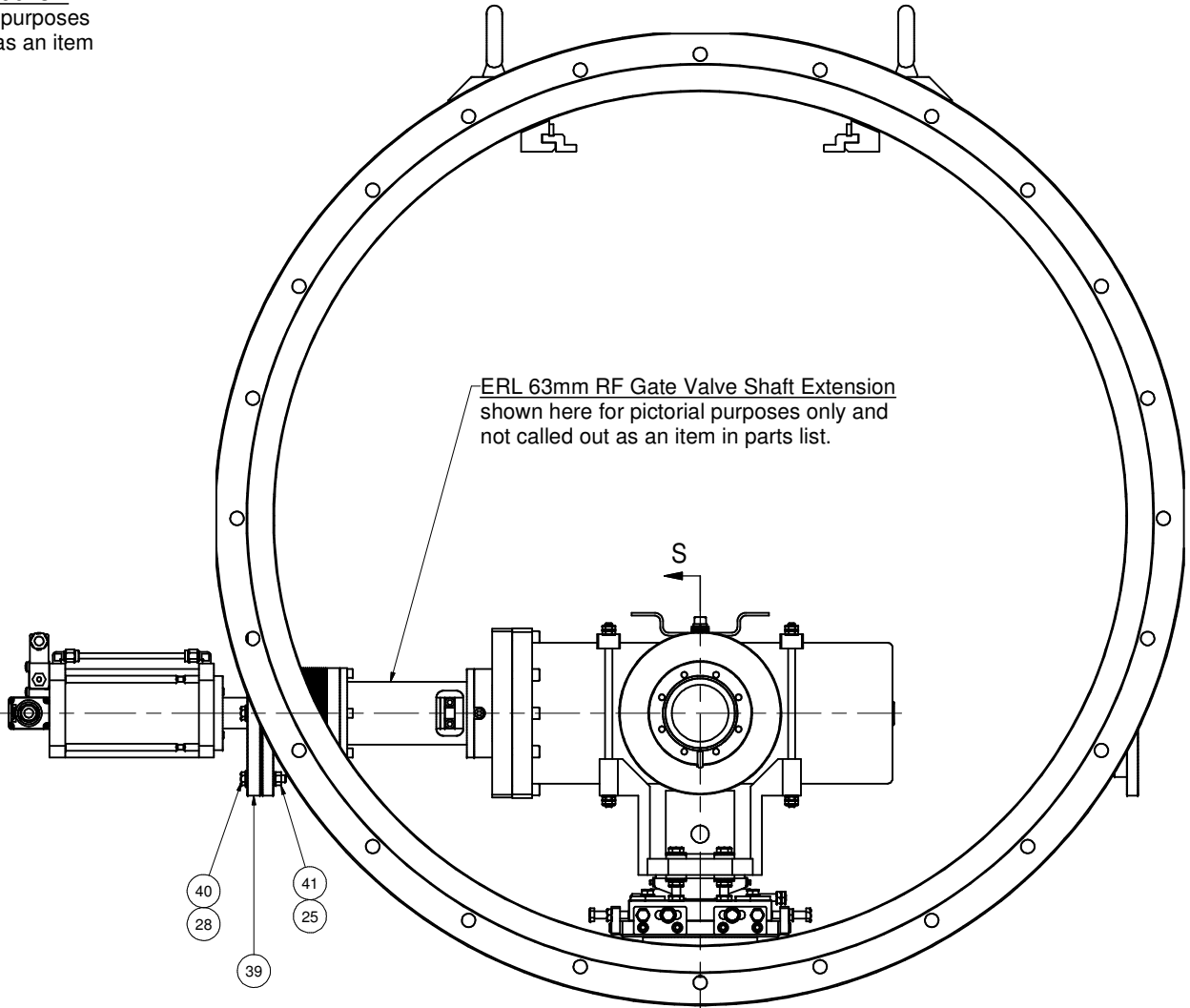


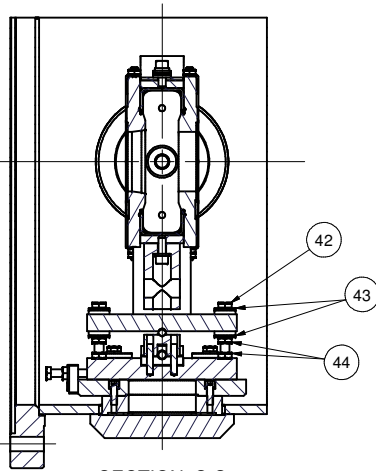
REVISIONS				
SYM.	ZONE	DESCRIPTION	DATE	APP.
A		NOTE 1 ADDED	9/4/07	VM



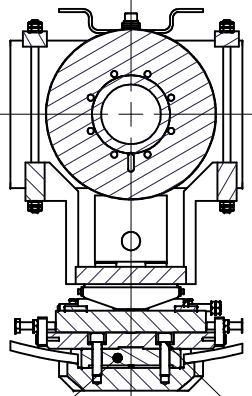
Vac. Vessel - Beam Exit End
& GV Shaft Extension SubAsm
shown here for pictorial purposes
only and not called out as an item
in parts list.



ERL 63mm RF Gate Valve Shaft Extension
shown here for pictorial purposes only
and not called out as an item in parts list.

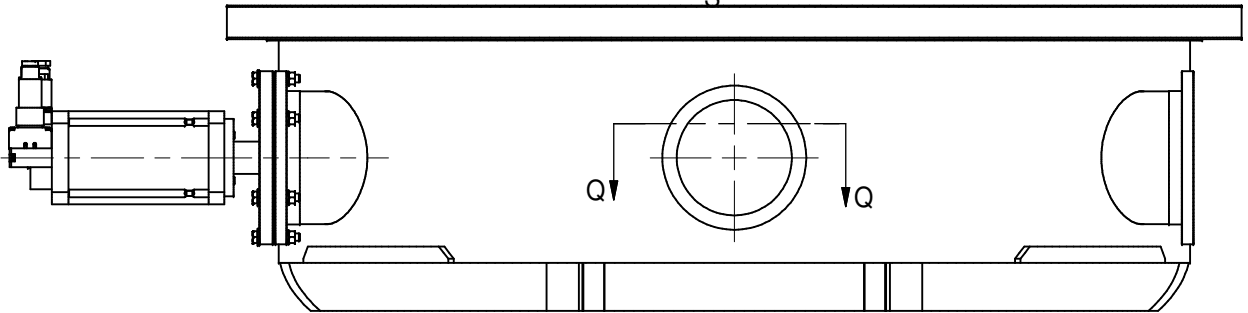


SECTION S-S



SECTION Q-Q

See
Sheet 2



1 Gate Valve at Beam Exit

FILE NAME: 7110-008
SHEET NO.: 1
DFT. SCALE: 1:4
MATERIAL: As Noted in Parts List
QTY: As Req'd
NOTES: 1. THIS ASSEMBLY IS FOR HORIZONTAL TEST CRYOMODULE. FOR
ERL INJECTOR CRYOMODULE SEE "GATE VALVE AT BEAM EXIT 2"
ON SHEET 8.

FOR MACHINING LUBRICANT USE ONLY
ALKALINE DETERGENT LUBRICANT CIMSTAR 40
OR EQUIVALENT APPROVED BY CORNELL LEPP

TECHNICAL RESOURCE APPROVALS REQUIRED BEFORE FABRICATION			
	OK	DATE	N/A
DRAFTING (O'Connell):			
MACHINE SHOP (Kaminski):			
CHEMISTRY (Conklin):			
ELECTRONICS SHOP (Barley):			
FURNACE BRAZING (Sherwood):			
BEAM WELDING (Sears):			
WELDING OTHER (Gallagher):			
UTILITIES INTEGRATION (Gallagher):			
STOCKROOMS (Lockwood):			



PRINT
DISTR.

CR-1

7110-008

REV.

A

SH. NO. 1 OF 10

UNLESS OTHERWISE
SPECIFIED:

DIMENSIONS ARE IN INCHES:

TOLERANCES ON:

.00 ± .010

.000 ± .005

FRACTIONS ± 1/64

ANGLES ± 0.5°

ALL SURFACES

ITEM	DWG. NO.	DESCRIPTION	QUANTITY	REMARKS	REV.
44	Pur.	Hex Jam Nut 3/8-24 UNF	8	Stn. Stl.	
43	Pur.	Spherical Washer, Self Aligning 5/16-3/8	8	McMaster-Carr's 91944A450 or Equiv	
42	Pur.	Hex Cap Screw 3/8-24 UNF X 3.0 Lg	4	Stn. Stl.	
41	Pur.	Hex Nut 5/16-24 UNF	6	Stn. Stl.	
40	Pur.	Hex Cap Screw 5/16-24 UNF X 1.75 Lg.	6	Stn. Stl.	
39	Sht. 7	Gatevalve Port Rot. Flange	1		
38	Pur.	Spring Lock Washer 3/8 Stn. Stl. 316	4	McMaster-Carr's 92147A031 or Equiv.	
37	Pur.	Hex Socket Hd Cap Screw 3/8-24 UNF x 1.5 Lg. Stn. Stl. 18-8	4	McMaster-Carr's 92196A363 or Equiv.	
28	Pur.	Washer Type A 5/16 Dia Narrow	6	Stn. tl.	
25	Pur.	Spring Washer 5/16	6	Stn. Stl.	
3	Sht. 3	Beam Exit G.V. Main Body SubAsm	1		
2	Sht. 2	Gate Valve Support SubAsm	1		
1	Sht. 1	Gatevalve at Beam Exit	X		
			G1	G2	G3
			QUANTITY		
			REMARKS		
			REV.		

PLOT DATE: 1/8/2008
CAD FILE NAME: 7110-008.idw



CORNELL UNIVERSITY
Floyd R. Newman Laboratory
Ithaca, NY 14853

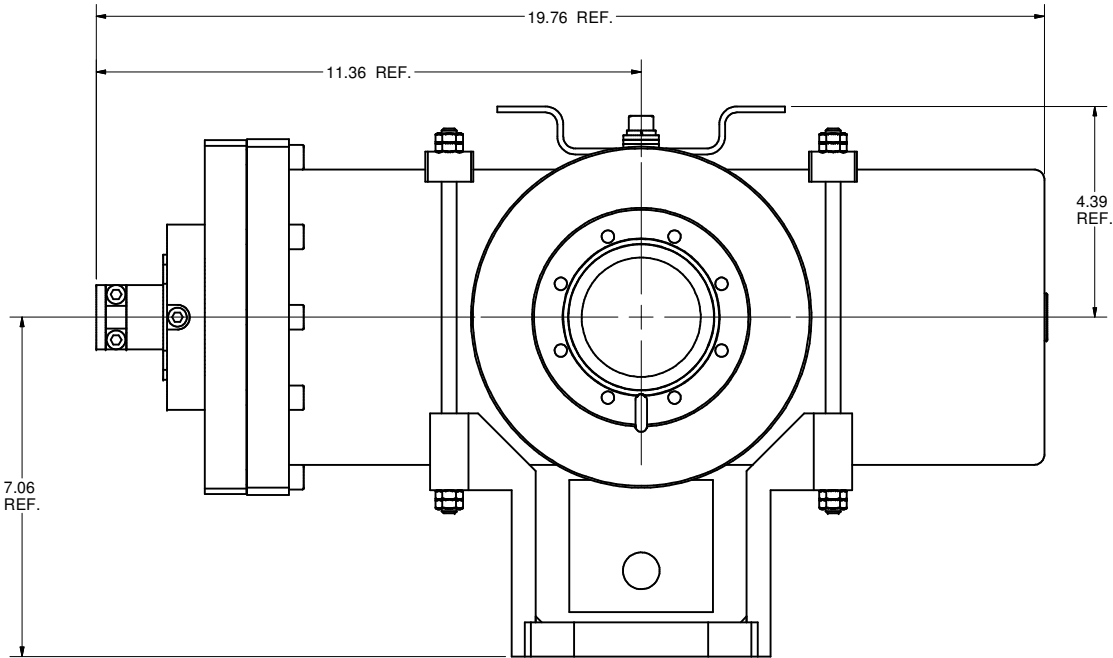
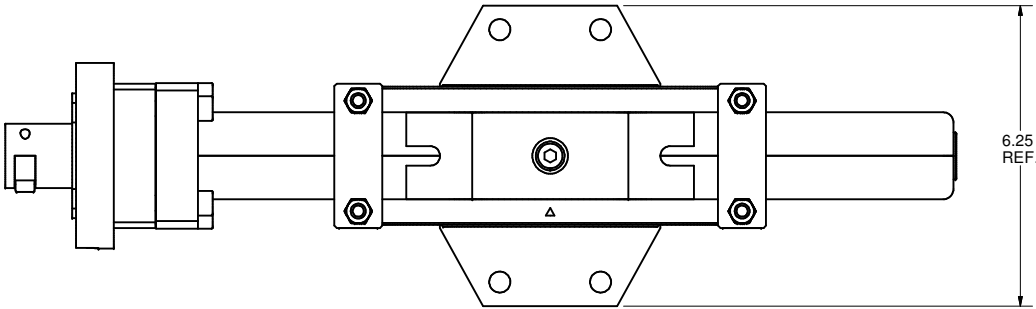
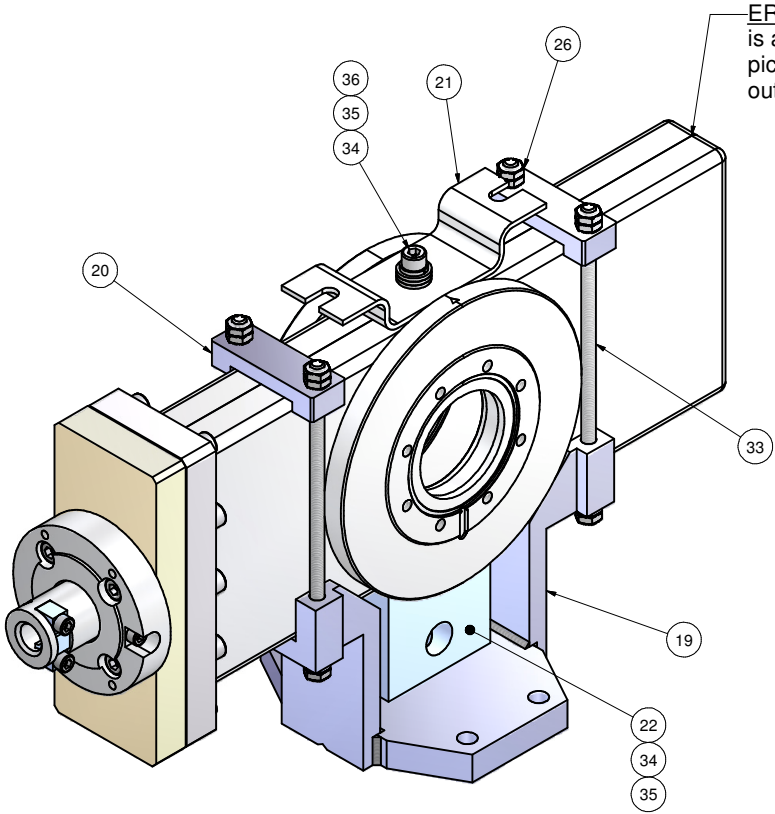
ERL HORIZONTAL TEST CRYOMODULE
GATE VALVE AT BEAM EXIT
Gate Valve at Beam Exit Assembly

CHECKED BY: V.M.	DRAWN BY: JGL	DRAWN FOR: M.Liepe	DATE: 5/29/2007	SCALE: D	7110-008	REV. A
------------------	---------------	--------------------	-----------------	----------	----------	--------

APPROVED BY: T.I.O.

SH. NO. 1 OF 10

REVISIONS			
SYM.	ZONE	DESCRIPTION	DATE APP.



3 Beam Exit G.V. Main Body SubAsm

FILE NAME: 7110-008
SHEET NO.: 3
DFT. SCALE:
MATERIAL: As Noted in Parts List
QTY: 1
NOTES:

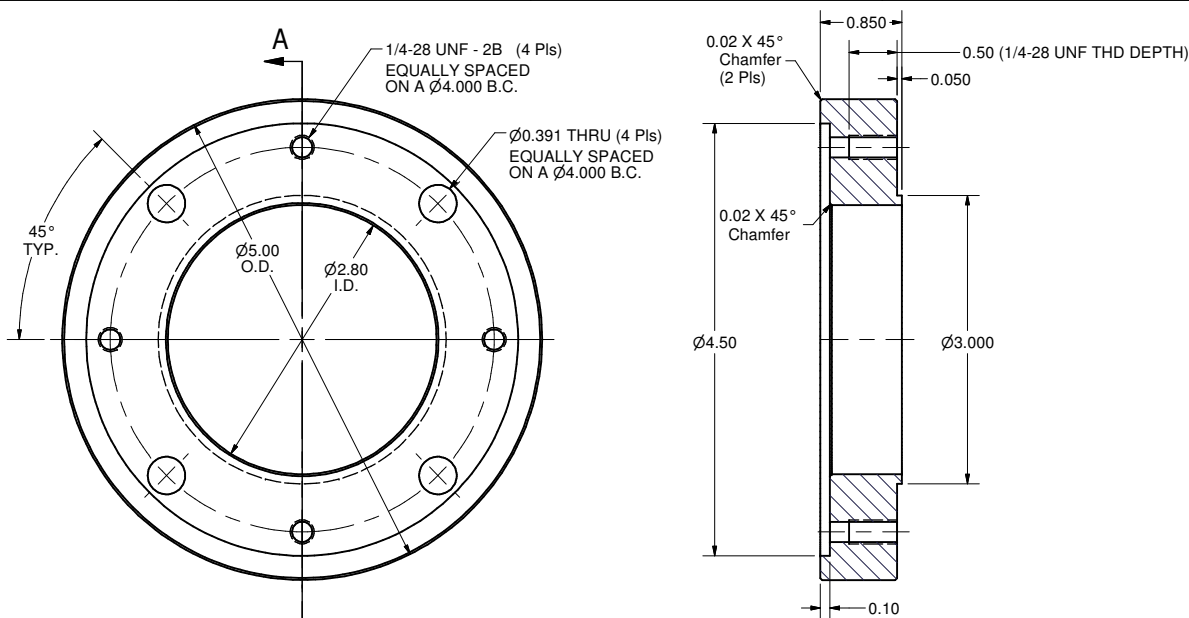
FOR MACHINING LUBRICANT USE ONLY
ALKALINE DETERGENT LUBRICANT CIMSTAR 40
OR EQUIVALENT APPROVED BY CORNELL LEPP

TECHNICAL RESOURCE APPROVALS REQUIRED BEFORE FABRICATION			
	OK	DATE	N/A
DRAFTING (O'Connell):			
MACHINE SHOP (Kaminski):			
CHEMISTRY (Conklin):			
ELECTRONICS SHOP (Barley):			
FURNACE BRAZING (Sherwood):			
BEAM WELDING (Sears):			
WELDING OTHER (Gallagher):			
UTILITIES INTEGRATION (Gallagher):			
STOCKROOMS (Lockwood):			

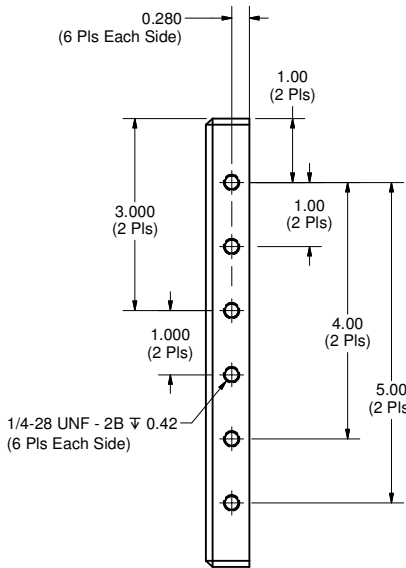
REV.	SH. NO.	3	OF	10
D	7110-008			
CR-1				

36	Pur.	Hex Socket Hd Cap Screw 8M x 1.25 x 20 mm Lg. Stl.	2						
35	Pur.	Plain Washer - M8	3						
34	Pur.	Heavy Helical Spring Lock Washer M8	2						
33	Pur.	Clamp Rod 5/16-24 UNF Thd. Rod x 8.0 Lg. 304 Stn. Stl.	4						
26	Pur.	Hex Jam Nut 5/16-24 UNF Stl.	16						
22	Sht. 7	Bottom Block	1						
21	Sht. 7	Suspension Bracket	1						
20	Sht. 7	Top Clip	2						
19	Sht. 6	Gate Valve Frame Weldment	1						
3	Sht. 3	Beam Exit G.V. Main Body SubAsm	X						
ITEM	DWG. NO.	DESCRIPTION	G1	G2	G3	QUANTITY	REMARKS	REV.	
PLOT DATE: 1/8/2008 CAD FILE NAME: 7110-008.idw									
UNLESS OTHERWISE SPECIFIED: DIMENSIONS ARE IN INCHES: TOLERANCES ON: .00 ± .010 .000 ± .005 FRACTIONS ± 1/64 ANGLES ± 0.5° ALL SURFACES									
CORNELL UNIVERSITY FLOYD R. NEWMAN LABORATORY ITHACA, NY 14853									
ERL HORIZONTAL TEST CRYOMODULE GATE VALVE AT BEAM EXIT Beam Exit G.V. Main Body SubAsm									
CHECKED BY: V.M.		DRAWN BY: JGL		DRAWN FOR: M.Liepe		DATE: 5/29/2007		SCALE: D	
APPROVED BY: T.I.O.								7110-008 SH. NO. 3 OF 10	

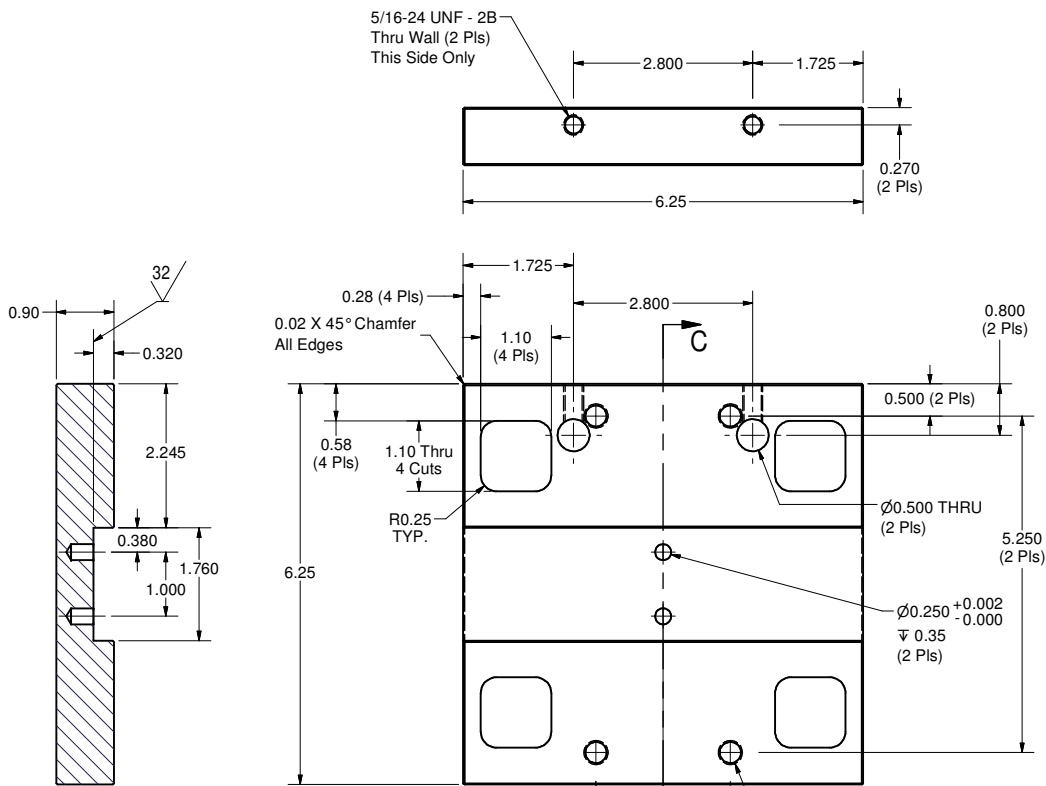
REVISIONS				
SYM.	ZONE	DESCRIPTION	DATE	APP.
A	E-5	Part 5: 1/4-28 UNF (6 Pls Each Side) was 1/4-28 UNF (2 Pls Each Side) JGL	6/21/07	V.M.



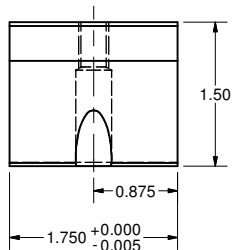
4 Bottom Ring
FILE NAME: 7110-008
SHEET NO.: 4
DFT. SCALE: 1:1
MATERIAL: 304L Stn. Stl.
QTY: 1
NOTES:



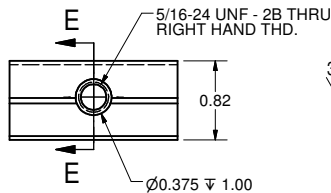
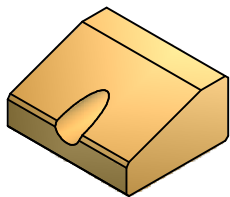
5 Bottom Plate
FILE NAME: 7110-008
SHEET NO.: 4
DFT. SCALE: 2:3
MATERIAL: 304L Stn. Stl.
QTY: 1
NOTES:



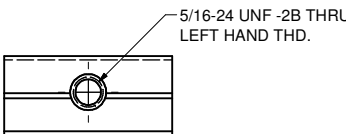
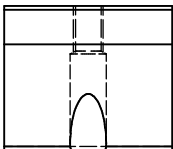
6 Middle Plate
FILE NAME: 7110-008
SHEET NO.: 4
DFT. SCALE: 2:3
MATERIAL: 304L Stn. Stl.
QTY: 1
NOTES:



7 Wedge-Right
FILE NAME: 7110-008
SHEET NO.: 4
DFT. SCALE: 1:1
MATERIAL: Bronze, Silicone
QTY: 1
NOTES:





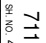




8 Wedge-Left
FILE NAME: 7110-008
SHEET NO.: 4
DFT. SCALE: 1:1
MATERIAL: Bronze, Silicone
QTY: 1
NOTES: 1) This part is identical dimensionally to Item No. 7 (Wedge-Right) but with LEFT HAND 5/16-24 UNF Thread.

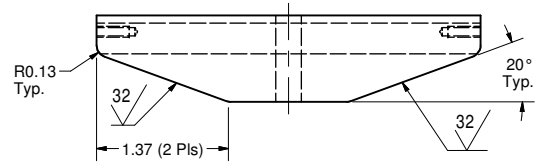
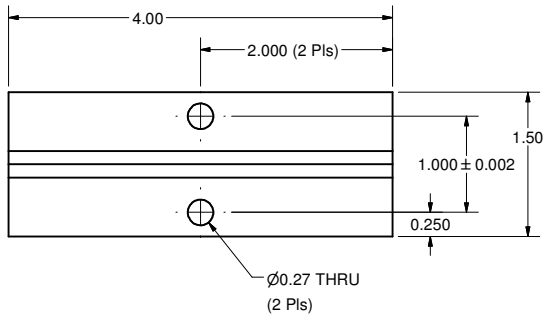


FOR MACHINING LUBRICANT USE ONLY
ALKALINE DETERGENT LUBRICANT CIMSTAR 40
OR EQUIVALENT APPROVED BY CORNELL LEPP

TECHNICAL RESOURCE APPROVALS REQUIRED BEFORE FABRICATION			
	OK	DATE	N/A
DRAFTING (O'Connell):			
MACHINE SHOP (Kaminski):			
CHEMISTRY (Conklin):			
ELECTRONICS SHOP (Barley):			
FURNACE BRAZING (Sherwood):			
BEAM WELDING (Sears):			
WELDING OTHER (Gallagher):			
UTILITIES INTEGRATION (Gallagher):			
STOCKROOMS (Lockwood):			

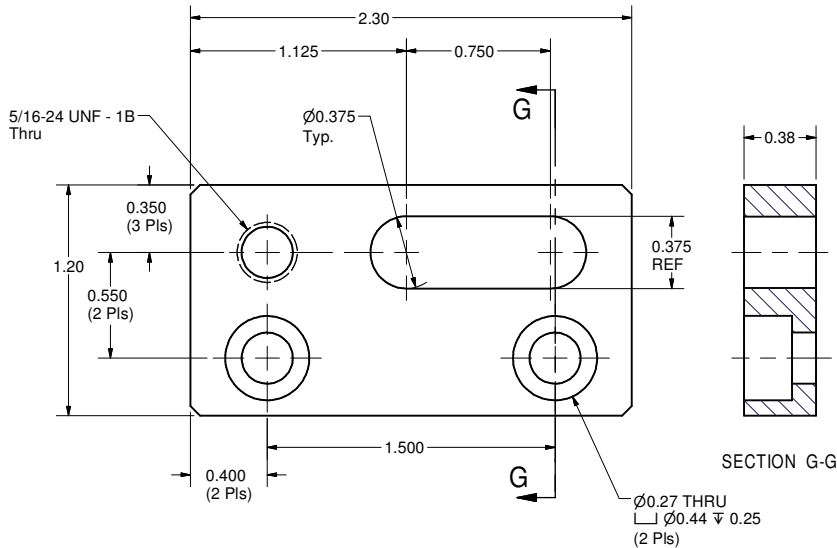
	ITEM	DWG. NO.	DESCRIPTION	G1	G2	G3	REMARKS	REV.
				QUANTITY				
	PRINT DATE: 1/8/2008	CAD FILE NAME: 7110-008.idw						
	DISTR.							
	CR-1	UNLESS OTHERWISE SPECIFIED:			CORNELL UNIVERSITY Floyd R. Newman Laboratory Ithaca, NY 14853			
		DIMENSIONS ARE IN INCHES: TOLERANCES ON: .00 ± .010 .000 ± .005 FRACTIONS ± 1/64 ANGLES ± 0.5° ALL SURFACES ✓						
	REV.	ERL HORIZONTAL TEST CRYMODULE						
		GATE VALVE AT BEAM EXIT						
	A	G. V. Support SubAsm Part Details						
		CHECKED BY: V.M.	DRAWN BY	DRAWN FOR	DATE	SCALE		7110-008
APPROVED BY: T.I.O.	JGL	M.Liepe	5/29/2007		SH. NO. 4 OF 10	A		

REVISIONS				
SYM.	ZONE	DESCRIPTION	DATE	APP.



9 Top Wedge

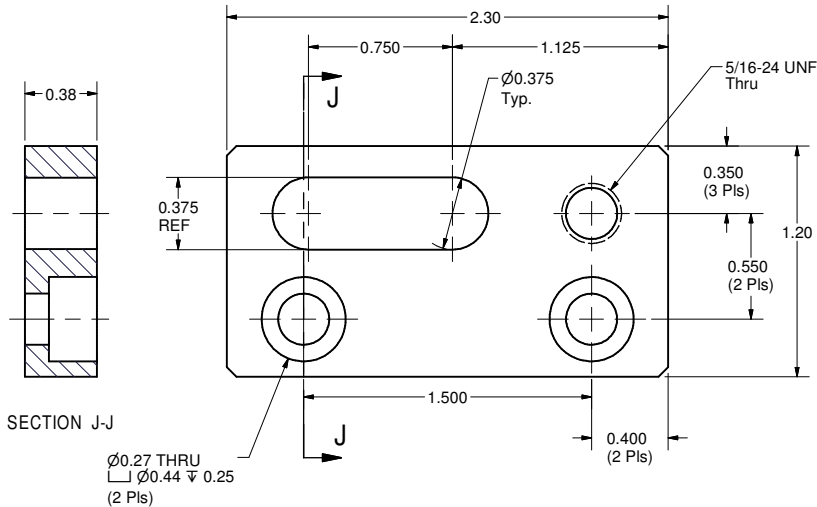
FILE NAME: 7110-008
SHEET NO.: 5
DFT. SCALE: 1:1
MATERIAL: 304L Stn. Stl.
QTY: 1
NOTES:



SECTION G-G

10 Push Pull Plate Left

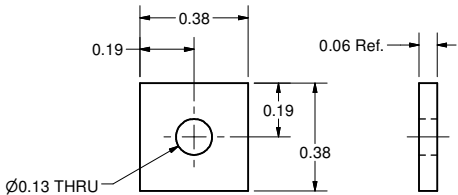
FILE NAME: 7110-008
SHEET NO.: 5
DFT. SCALE: 2:1
MATERIAL: 304L Stn. Stl.
QTY: 1
NOTES:



SECTION J-J

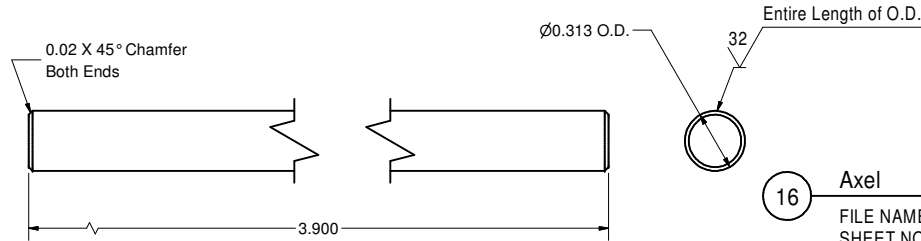
11 Push Pull Plate Right

FILE NAME: 7110-008
SHEET NO.: 5
DFT. SCALE: 2:1
MATERIAL: 304L Stn. Stl.
QTY: 1
NOTES:



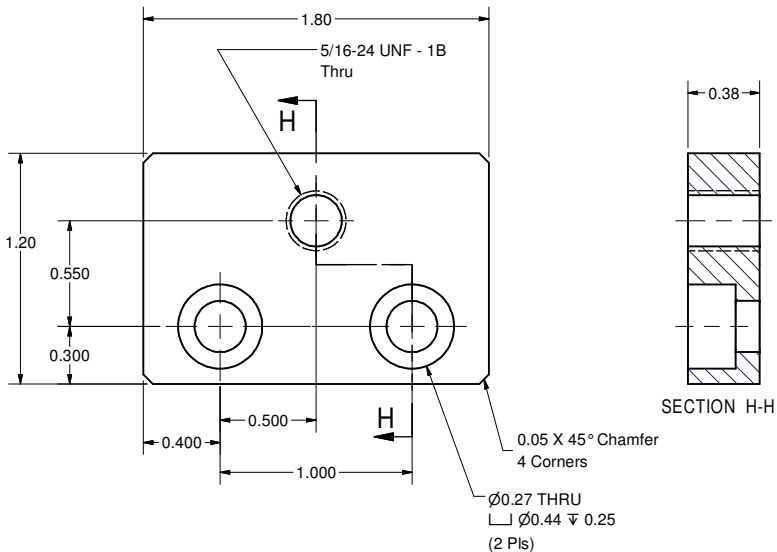
14 Stop Washer

FILE NAME: 7110-008
SHEET NO.: 5
DFT. SCALE: 3:1
MATERIAL: 1/16" Thk. 304L Stn. Stl. Sheet
QTY: 2
NOTES:



16 Axel

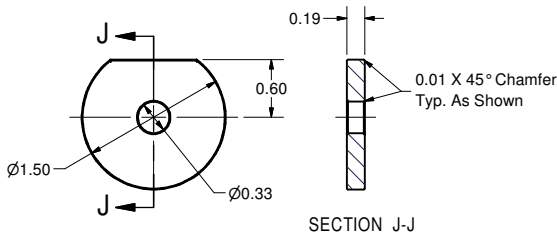
FILE NAME: 7110-008
SHEET NO.: 5
DFT. SCALE: 1:1
MATERIAL: Bronze, Silicone
QTY: 1
NOTES:



SECTION H-H

12 Push Plate

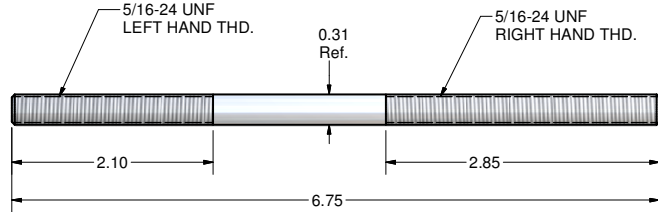
FILE NAME: 7110-008
SHEET NO.: 5
DFT. SCALE: 2:1
MATERIAL: 304L Stn. Stl.
QTY: 2
NOTES:



SECTION J-J

13 Wide Washer

FILE NAME: 7110-008
SHEET NO.: 5
DFT. SCALE: 1:1
MATERIAL: 304L Stn. Stl.
QTY: 4
NOTES:



15 Threaded Rod

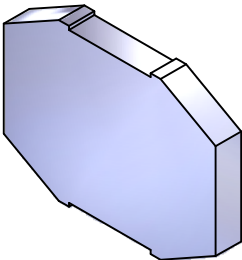
FILE NAME: 7110-008
SHEET NO.: 5
DFT. SCALE: 1:1
MATERIAL: 5/16" Dia 304L Stn. Stl. Rod
QTY: 1
NOTES:

FOR MACHINING LUBRICANT USE ONLY
ALKALINE DETERGENT LUBRICANT CIMSTAR 40
OR EQUIVALENT APPROVED BY CORNELL LEPP

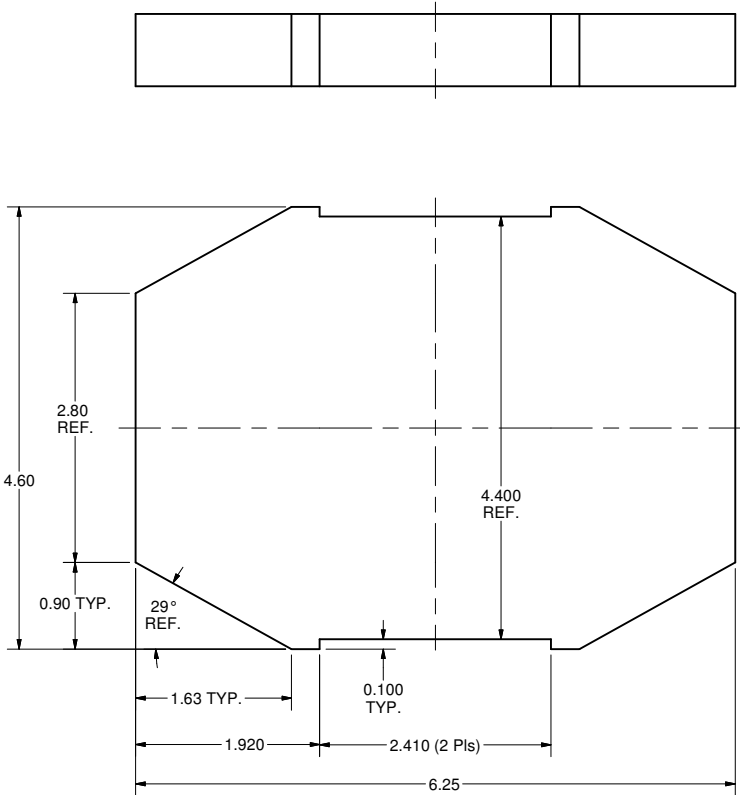
TECHNICAL RESOURCE APPROVALS REQUIRED BEFORE FABRICATION			
	OK	DATE	N/A
DRAFTING (O'Connell):			
MACHINE SHOP (Kaminski):			
CHEMISTRY (Conklin):			
ELECTRONICS SHOP (Barley):			
FURNACE BRAZING (Sherwood):			
BEAM WELDING (Sears):			
WELDING OTHER (Gallagher):			
UTILITIES INTEGRATION (Gallagher):			
STOCKROOMS (Lockwood):			

ITEM	DWG. NO.	DESCRIPTION	G1	G2	G3	REMARKS	REV.
PRINT DISTR.	7110-008	PLOT DATE: 1/8/2008 CAD FILE NAME: 7110-008.idw					
CR-1		UNLESS OTHERWISE SPECIFIED: DIMENSIONS ARE IN INCHES: TOLERANCES ON: .00 ± .010 .000 ± .005 FRACTIONS ± 1/64 ANGLES ± 0.5° ALL SURFACES					
REV.		CORNELL UNIVERSITY FLOYD R. NEWMAN LABORATORY ITHACA, NY 14853					
		ERL HORIZONTAL TEST CRYMODULE GATE VALVE AT BEAM EXIT G. V. Support SubAsm Part Details					
		CHECKED BY: V.M. APPROVED BY: T.I.O.					
		DRAWN BY: JGL DRAWN FOR: M.Liepe DATE: 5/29/2007 SCALE: D					
		7110-008 SH. NO. 5 OF 10					

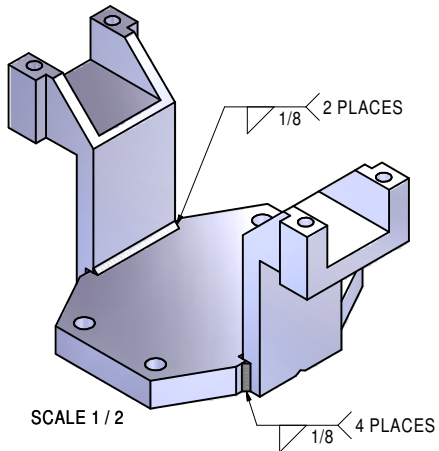
REVISIONS				
SYM.	ZONE	DESCRIPTION	DATE	APP.
A		Item 19: Note 2 added.	12/10/07	VM
B		PT.19 ADDED 1.840 DIMENSION + CHANGED NOTE 2.	1/8/08	TOC



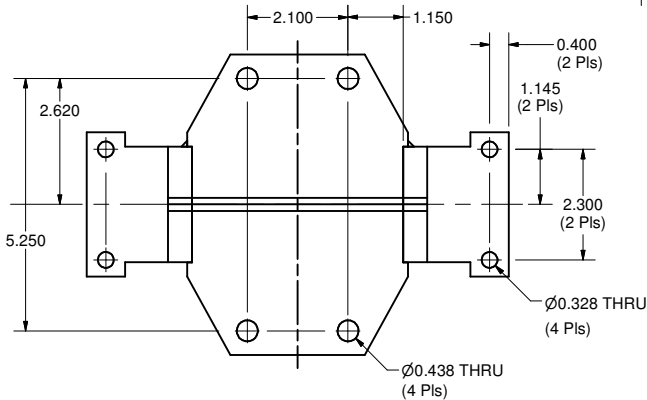
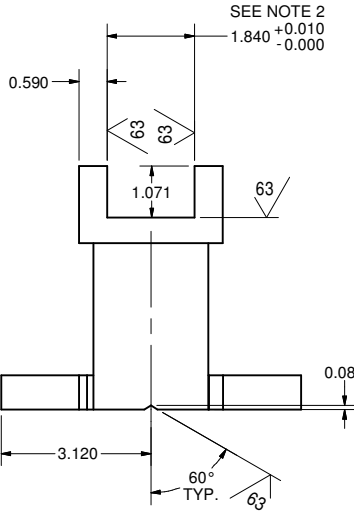
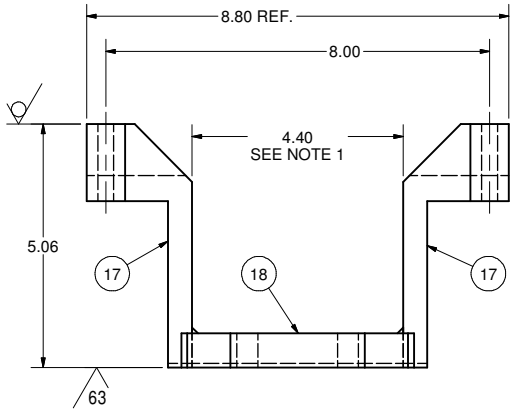
SCALE 1 / 2



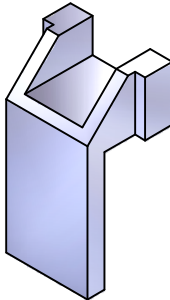
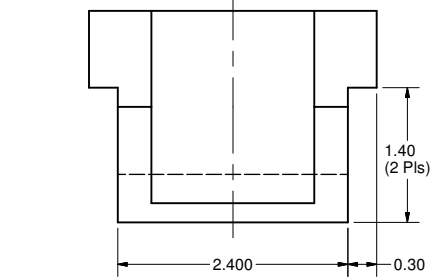
18 Frame Bottom Plate
FILE NAME: 7110-008
SHEET NO.: 6
DFT. SCALE: 1:1
MATERIAL: 3/4" Thk. 304L Stn. Stl. Sheet
QTY: 1
NOTES:



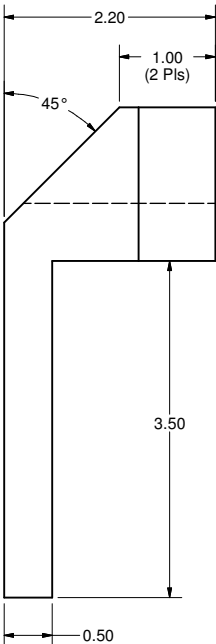
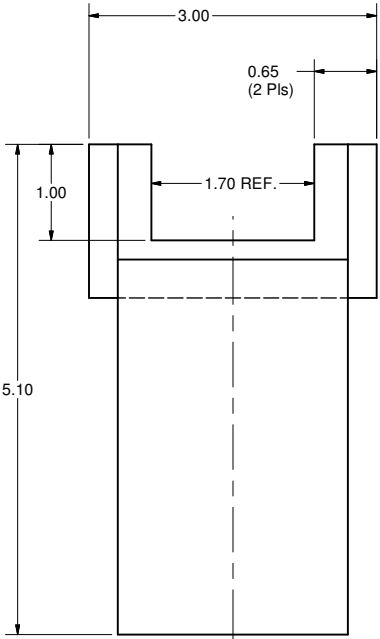
SCALE 1 / 2



19 Gate Valve Frame Weldment
FILE NAME: 7110-008
SHEET NO.: 6
DFT. SCALE: 1:2
MATERIAL: As Noted
QTY: 1
NOTES: 1. Use spacer to keep dimension during welding.
2. Determined by JPK to be 1.840 +0.010 -0.000



SCALE 1 / 2



17 Frame Side Plate
FILE NAME: 7110-008
SHEET NO.: 6
DFT. SCALE: 1:1
MATERIAL: 304L Stn. Stl.
QTY: 2
NOTES:

FOR MACHINING LUBRICANT USE ONLY
ALKALINE DETERGENT LUBRICANT CIMSTAR 40
OR EQUIVALENT APPROVED BY CORNELL LEPP

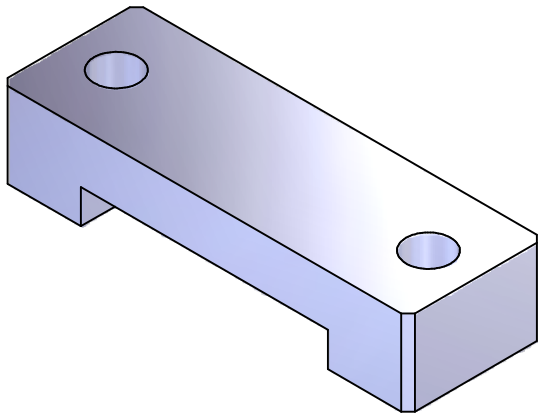
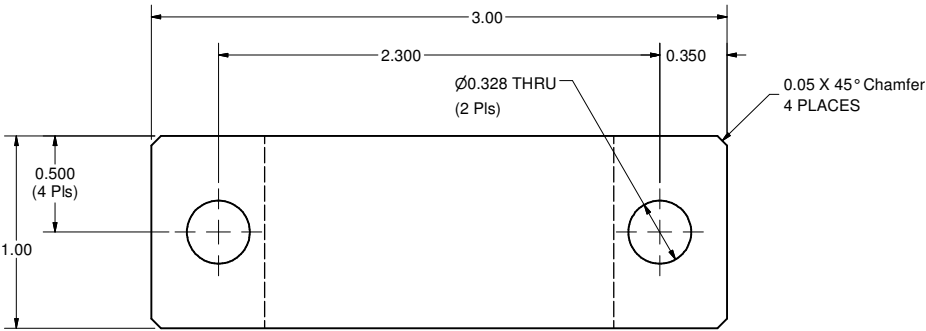
TECHNICAL RESOURCE APPROVALS REQUIRED BEFORE FABRICATION			
	OK	DATE	N/A
DRAFTING (O'Connel):			
MACHINE SHOP (Kaminski):			
CHEMISTRY (Conklin):			
ELECTRONICS SHOP (Barley):			
FURNACE BRAZING (Sherwood):			
BEAM WELDING (Sears):			
WELDING OTHER (Gallagher):			
UTILITIES INTEGRATION (Gallagher):			
STOCKROOMS (Lockwood):			

		ITEM		DWG. NO.		DESCRIPTION		G1	G2	G3	REMARKS		REV.	
								QUANTITY						
D		PRINT DISTR.		PLOT DATE: 1/8/2008 CAD FILE NAME: 7110-008.idw										
7110-008 SH. NO. 6 OF 10		CR-1		UNLESS OTHERWISE SPECIFIED: DIMENSIONS ARE IN INCHES: TOLERANCES ON: .00 ± .010 .000 ± .005 FRACTIONS ± 1/64 ANGLES ± 0.5° ALL SURFACES ✓		 CORNELL UNIVERSITY FLOYD R. NEWMAN LABORATORY ITHACA, NY 14853 LABORATORY FOR ELEMENTARY-PARTICLE PHYSICS								
				ERL HORIZONTAL TEST CRYMODULE GATE VALVE AT BEAM EXIT G V Frame Weldment & Details										
		CHECKED BY: V.M.		DRAWN BY JGL		DRAWN FOR M.Liepe		DATE 5/29/2007		SCALE D		7110-008 SH. NO. 6 OF 10		REV. B
B		REV.		APPROVED BY: T.I.O.										



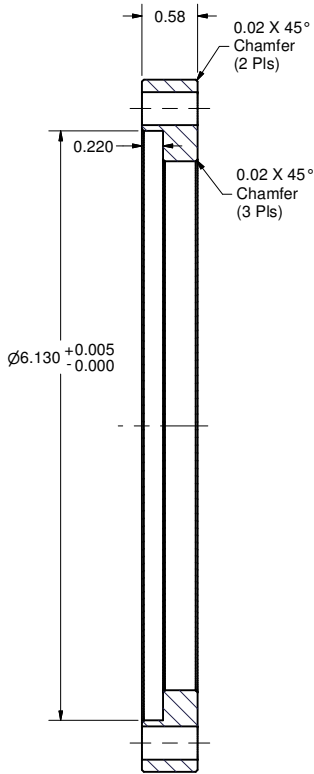
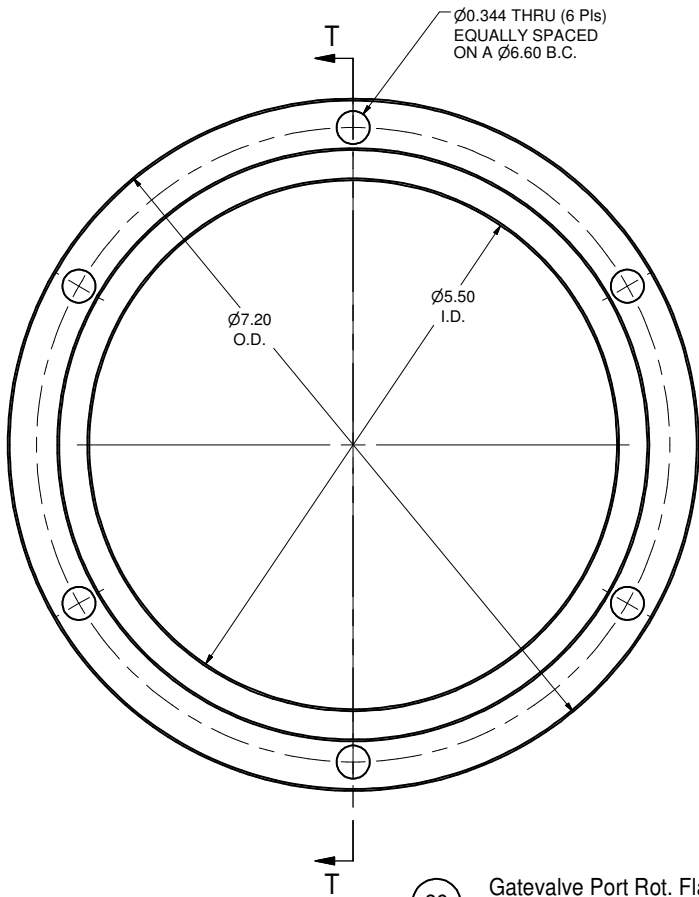
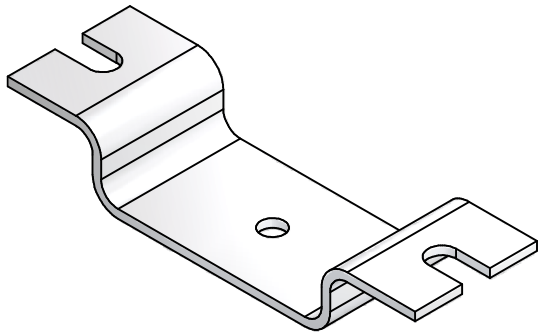
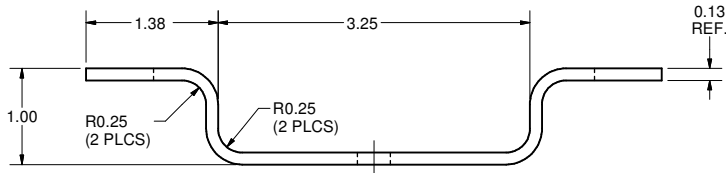
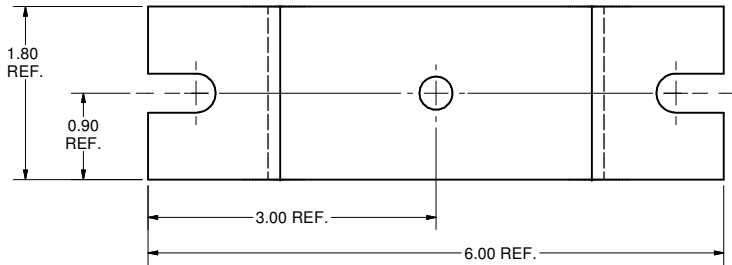
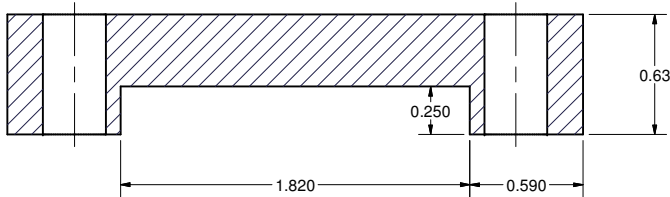
CORNELL UNIVERSITY
Floyd R. Newman Laboratory
Ithaca, NY 14853

REVISIONS				
SYM.	ZONE	DESCRIPTION		DATE APP.
A	B-8	Added Item No. 39	JGL	6/25/07 VM
B		PART 20: REMOVED TWO HOLES 1/4-28.		9/6/07 VM



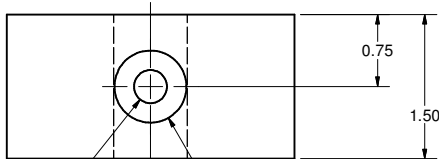
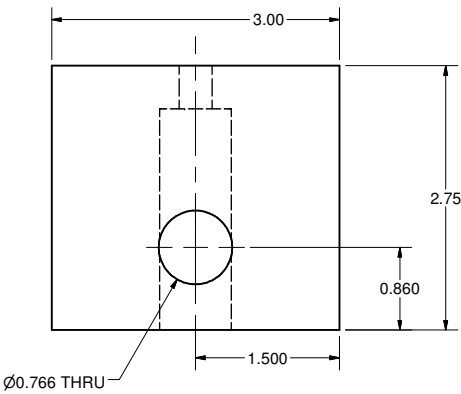
20 Top Clip

FILE NAME: 7110-008
SHEET NO.: 7
DFT. SCALE: 2:1
MATERIAL: 304L Stn. Stl.
QTY: 2
NOTES:



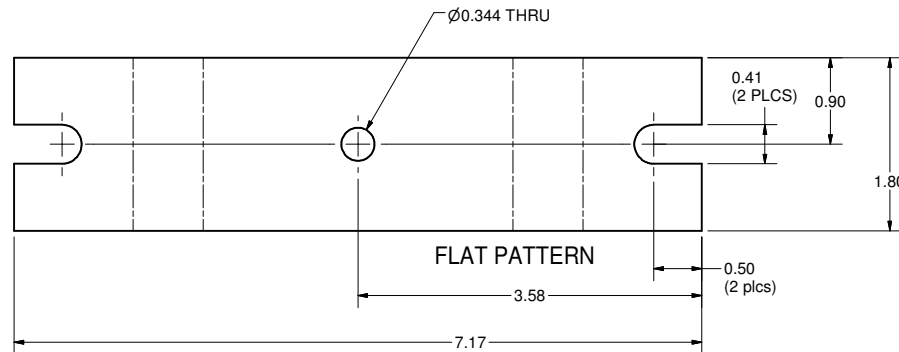
39 Gatevalve Port Rot. Flange

FILE NAME: 7110-008
SHEET NO.: 7
DFT. SCALE: 1:1
MATERIAL: Stn. Stl. 304L
QTY: 1
NOTES:



22 Bottom Block

FILE NAME: 7110-008
SHEET NO.: 7
DFT. SCALE: 1:1
MATERIAL: Aluminum 6061
QTY: As Req'd
NOTES: 1) This item HAS been made, detailed here for documentation purposes.

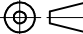


21 Suspension Bracket

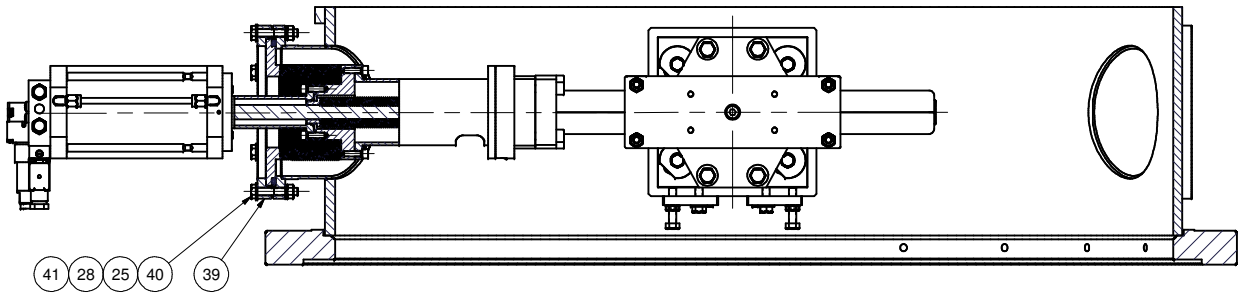
FILE NAME: 7110-008
SHEET NO.: 7
DFT. SCALE: 1:1
MATERIAL: 1/8" Thk. 316 Stn. Stl. Sheet
QTY: 1
NOTES: This item HAS been made, detailed here for documentation purposes.

FOR MACHINING LUBRICANT USE ONLY
ALKALINE DETERGENT LUBRICANT CIMSTAR 40
OR EQUIVALENT APPROVED BY CORNELL LEPP

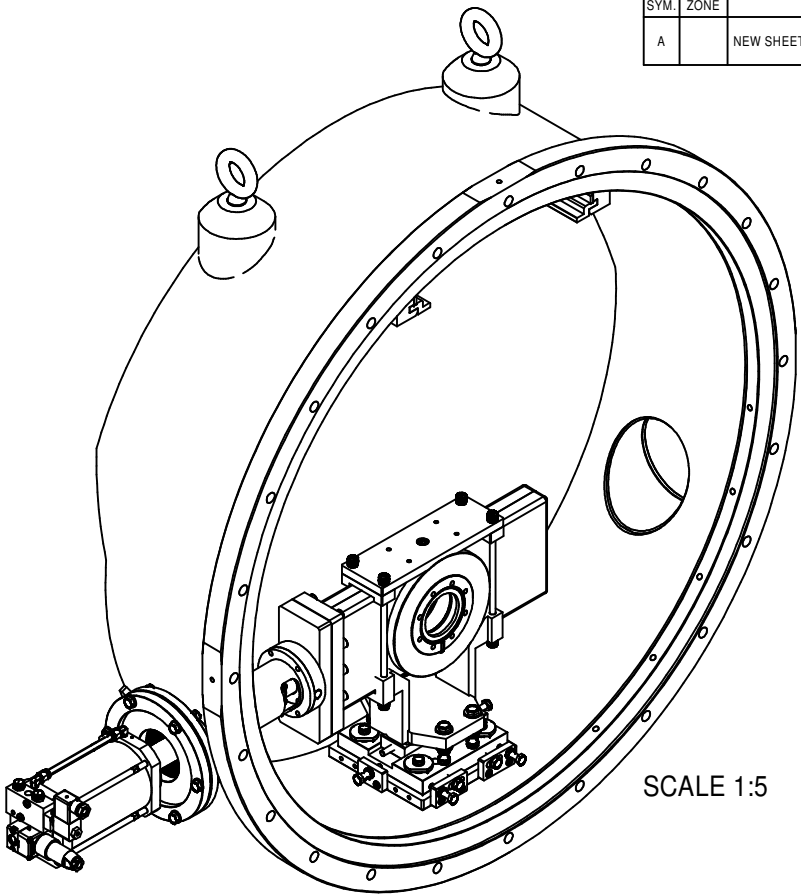
TECHNICAL RESOURCE APPROVALS REQUIRED BEFORE FABRICATION			
	OK	DATE	N/A
DRAFTING (O'Connell):			
MACHINE SHOP (Kaminski):			
CHEMISTRY (Conklin):			
ELECTRONICS SHOP (Barley):			
FURNACE BRAZING (Sherwood):			
BEAM WELDING (Sears):			
WELDING OTHER (Gallagher):			
UTILITIES INTEGRATION (Gallagher):			
STOCKROOMS (Lockwood):			

	ITEM	DWG. NO.	DESCRIPTION	G1	G2	G3	REMARKS	REV.		
				QUANTITY						
D	PRINT DISTR.	PLOT DATE: 1/8/2008								
		CAD FILE NAME: 7110-008.idw								
SH. NO. 7 OF 10	7110-008	CR-1	CORNELL UNIVERSITY Floyd R. Newman Laboratory Ithaca, NY 14853							
			ERL HORIZONTAL TEST CRYMODULE GATE VALVE AT BEAM EXIT G V Main Body Support Details							
B	REV.	CHECKED BY: V.M.		DRAWN BY	DRAWN FOR	DATE	SCALE	D	7110-008 SH. NO. 7 OF 10	REV. B
		APPROVED BY: T.I.O.		JGL	M.Liepe	5/29/2007				

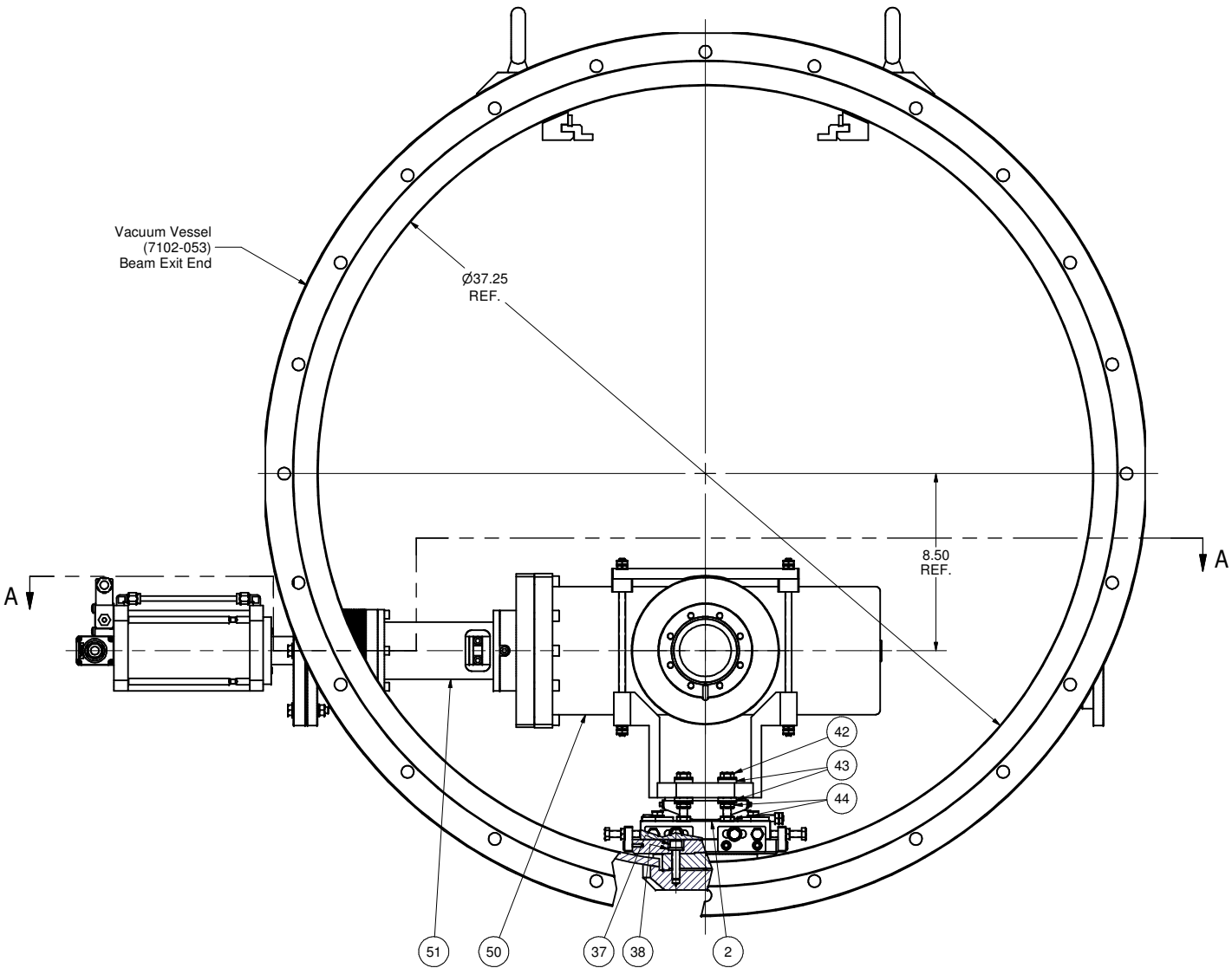
REVISIONS				
SYM.	ZONE	DESCRIPTION	DATE	APP.
A		NEW SHEET	9/5/07	VM



SECTION A-A



SCALE 1:5



Vacuum Vessel
(7102-053)
Beam Exit End

49 GATE VALVE AT BEAM EXIT 2 ASSEMBLY
FILE NAME: 7110-008
SHEET NO.: 8
DFT. SCALE: 1:4
MATERIAL:
QTY: 1 PER CRYOMODULE
NOTES: 1. THIS ASSEMBLY IS FOR ERL INJECTOR CRYOMODULE
BEAM EXIT END INSTALLATION.

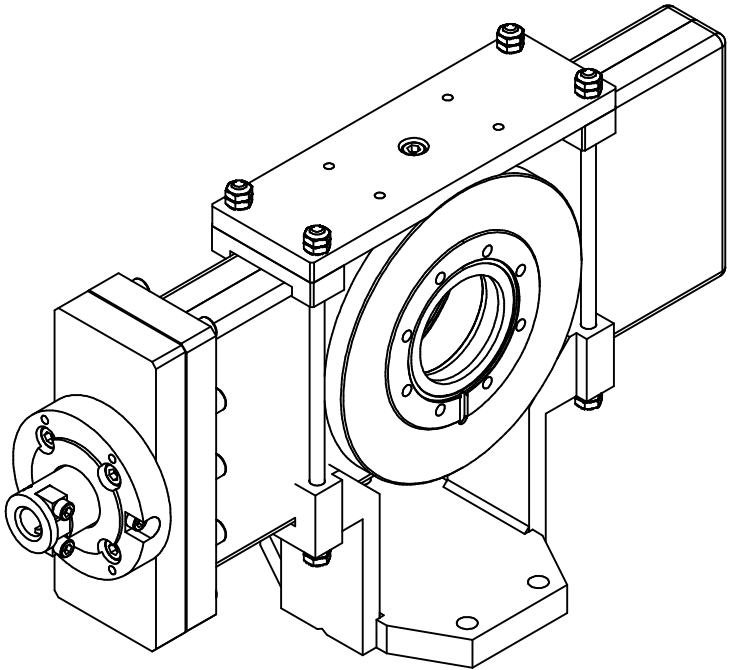
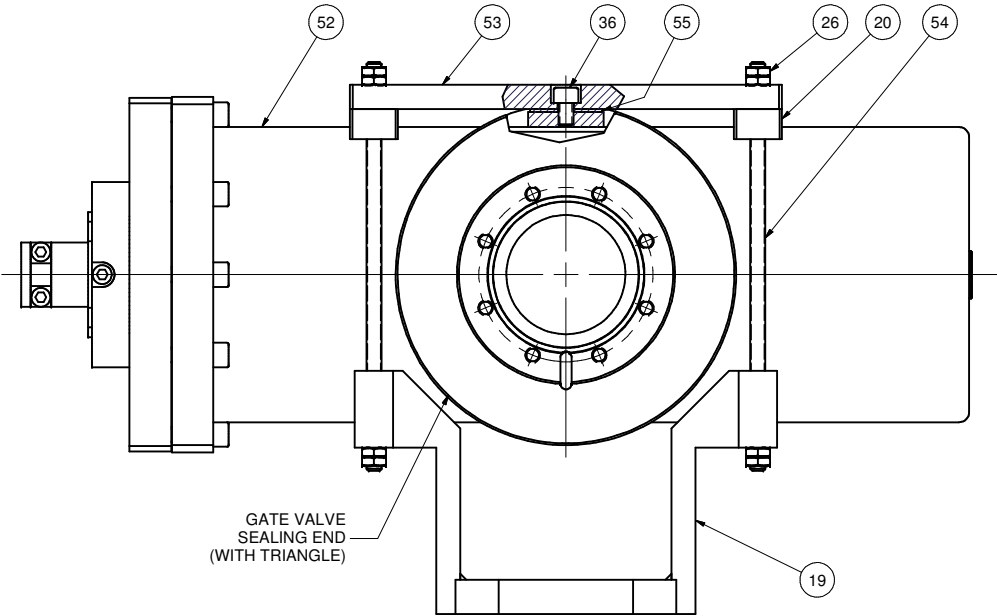
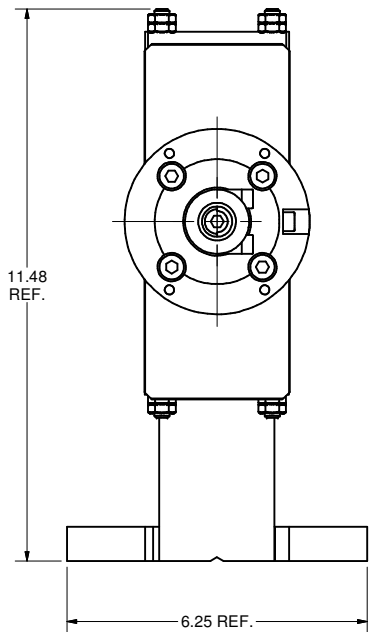
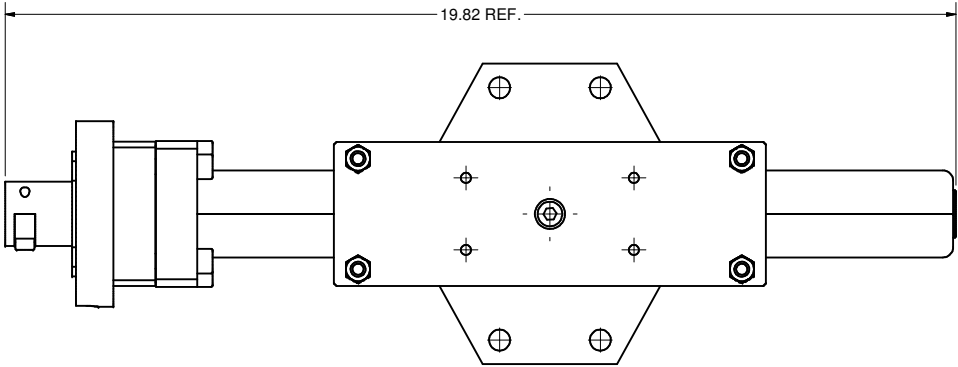
51	Purchased	ERL 63 MM RF GATE VALVE SHAFT EXTENSION	1			Part of ERL 63 mm RF Gate Valve	
50	7110-008 (Sh.9)	BEAM EXIT GATE VALVE MAIN BODY SUB-ASM 2	1				
44	Purchased	3/8-24 Hex Jam Nut, SS	8			McMaster-Carr's 91847A431, or equiv.	
43	Purchased	5/16-3/8 Self-Aligning Washer, 18-8 St.St.	8			McMaster-Carr's 91944A450, or equiv.	
42	Purchased	3/8-24 x 3 Hex Head Cap Screw, SS, Diconited	4			McMaster-Carr's 92240A362	
41	Purchased	5/16-24 Hex Nut, SS	6			McMaster-Carr's 91845A115, or equiv.	
40	Purchased	5/16-24 x 1-3/4 Hex Head Cap Screw, SS	6			McMaster-Carr's 92198A308, or equiv.	
39	7110-008 (Sh.7)	GATE VALVE PORT ROTATABLE FLANGE	1				
38	Purchased	3/8 Spring Washer, SS	4			McMaster-Carr's 92146A031	
37	Purchased	3/8-24 x 1-1/2 Socket Head Cap Screw, SS, Diconited	4			McMaster-Carr's 92196A363	
28	Purchased	5/16 Washer, SS	6			McMaster-Carr's 96659A107, or equiv.	
25	Purchased	5/16 Spring Washer, SS	6			McMaster-Carr's 92146A030, or equiv.	
2	7110-008 (Sh.2)	GATE VALVE SUPPORT SUB-ASM	1				
49	7110-008 (Sh.8)	GATE VALVE AT BEAM EXIT 2 ASSEMBLY	X				

FOR MACHINING LUBRICANT USE ONLY
ALKALINE DETERGENT LUBRICANT CIMSTAR 40
OR EQUIVALENT APPROVED BY CORNELL LEPP

TECHNICAL RESOURCE APPROVALS REQUIRED BEFORE FABRICATION			
	OK	DATE	N/A
DRAFTING (O'Connell):			
MACHINE SHOP (Kaminski):			
CHEMISTRY (Conklin):			
ELECTRONICS SHOP (Barley):			
FURNACE BRAZING (Sherwood):			
BEAM WELDING (Sears):			
WELDING OTHER (Gallagher):			
UTILITIES INTEGRATION (Gallagher):			
STOCKROOMS (Lockwood):			

ITEM	DWG. NO.	DESCRIPTION	G1	G2	G3	REMARKS	REV.
PLOT DATE: 1/8/2008 CAD FILE NAME: 7110-008.idw			QUANTITY				
UNLESS OTHERWISE SPECIFIED: DIMENSIONS ARE IN INCHES: TOLERANCES ON: .00 ± .010 .000 ± .005 FRACTIONS ± 1/64 ANGLES ± 0.5° ALL SURFACES			CR-1				
CORNELL UNIVERSITY LABORATORY FOR ELEMENTARY PARTICLE PHYSICS			CORNELL UNIVERSITY Floyd R. Newman Laboratory Ithaca, NY 14853				
ERL HORIZONTAL TEST CRYOMODULE GATE VALVE AT BEAM EXIT GATE VALVE AT BEAM EXIT 2 ASSEMBLY			DRAWN BY JGL				
CHECKED BY: V.M. APPROVED BY: T.I.O.			DRAWN FOR M.Liepe				
			DATE 5/29/2007				
			SCALE D				
			7110-008 SH. NO. 8 OF 10				
			REV. A				

REVISIONS				
SYM.	ZONE	DESCRIPTION	DATE	APP.
A		NEW SHEET	9/5/07	VM



50 BEAM EXIT GATE VALVE MAIN BODY SUB-ASM 2
FILE NAME: 7110-008
SHEET NO.: 9
DFT. SCALE: 1:2
MATERIAL:
QTY: 1 PER CRYOMODULE
NOTES:

55	7110-008 (Sh.10)	SPACER	1					
54	7110-008 (Sh.10)	CLAMP ROD 2	4					
53	7110-008 (Sh.10)	GATE VALVE TOP PLATE	1					
52	Purchased	ERL 63 MM RF GATE VALVE, MAIN BODY	1				Part of ERL 63 mm RF Gate Valve	
36	Purchased	M8 x 12 Socket Head Cap Screw, 316 SS, Diconited	1				McMaster-Carr's 92290A416	
26	Purchased	5/16-24 Hex Jam Nut, SS	16				McMaster-Carr's 91847A430, or equiv.	
20	7110-008 (Sh.7)	TOP CLIP	2					
19	7110-008 (Sh.6)	GATE VALVE FRAME WELDMENT	1					
50	7110-008 (Sh.9)	BEAM EXIT GATE VALVE MAIN BODY SUB-ASM 2	X					

FOR MACHINING LUBRICANT USE ONLY
ALKALINE DETERGENT LUBRICANT CIMSTAR 40
OR EQUIVALENT APPROVED BY CORNELL LEPP

TECHNICAL RESOURCE APPROVALS REQUIRED BEFORE FABRICATION			
	OK	DATE	N/A
DRAFTING (O'Connel):			
MACHINE SHOP (Kaminski):			
CHEMISTRY (Conklin):			
ELECTRONICS SHOP (Barley):			
FURNACE BRAZING (Sherwood):			
BEAM WELDING (Sears):			
WELDING OTHER (Gallagher):			
UTILITIES INTEGRATION (Gallagher):			
STOCKROOMS (Lockwood):			

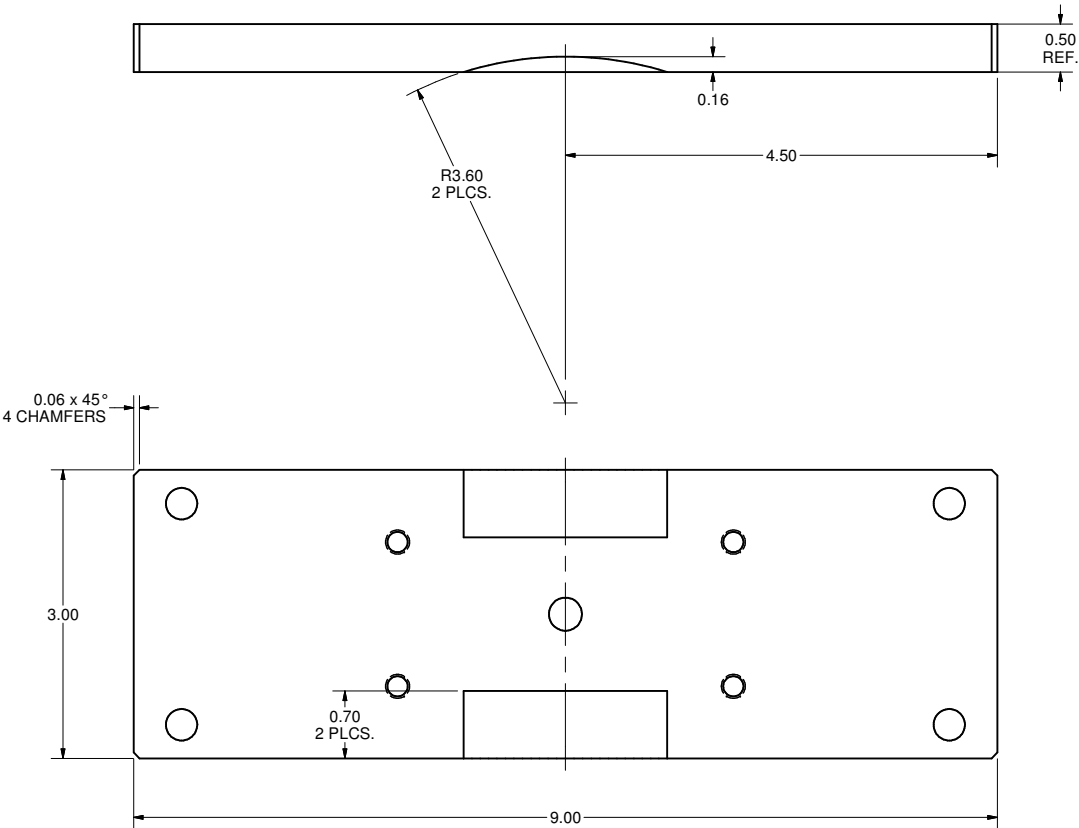
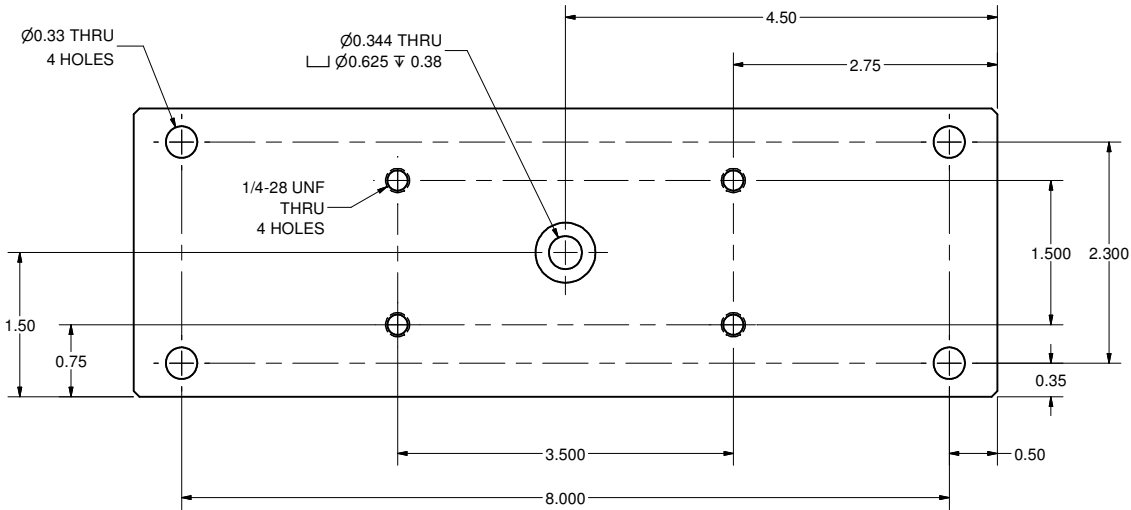


PRINT
DISTR.

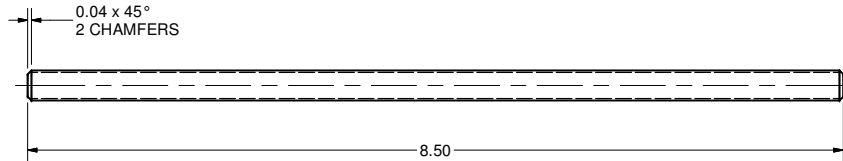
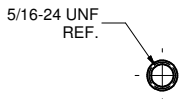
7110-008
SH. NO. 9 OF 10
REV. A

ITEM	DWG. NO.	DESCRIPTION	G1	G2	G3	REMARKS	REV.
PLOT DATE: 1/8/2008 CAD FILE NAME: 7110-008.idw			QUANTITY				
UNLESS OTHERWISE SPECIFIED: DIMENSIONS ARE IN INCHES: TOLERANCES ON: .00 ± .010 .000 ± .005 FRACTIONS ± 1/64 ANGLES ± 0.5° ALL SURFACES			CORNELL UNIVERSITY FLOYD R. NEWMAN LABORATORY ITHACA, NY 14853			CORNELL UNIVERSITY FLOYD R. NEWMAN LABORATORY ITHACA, NY 14853	
ERL HORIZONTAL TEST CRYOMODULE GATE VALVE AT BEAM EXIT BEAM EXIT GATE VALVE MAIN BODY SUB-ASM 2			DRAWN BY JGL			DRAWN FOR M.Liepe	
CHECKED BY: V.M. APPROVED BY: T.I.O.			DATE 5/29/2007			SCALE D	
			7110-008 SH. NO. 9 OF 10			REV. A	

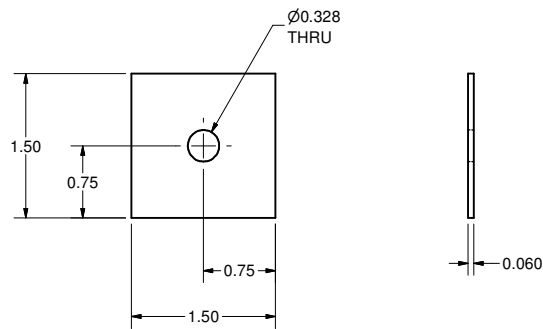
REVISIONS				
SYM.	ZONE	DESCRIPTION	DATE	APP.
A		NEW SHEET	9/5/07	VM



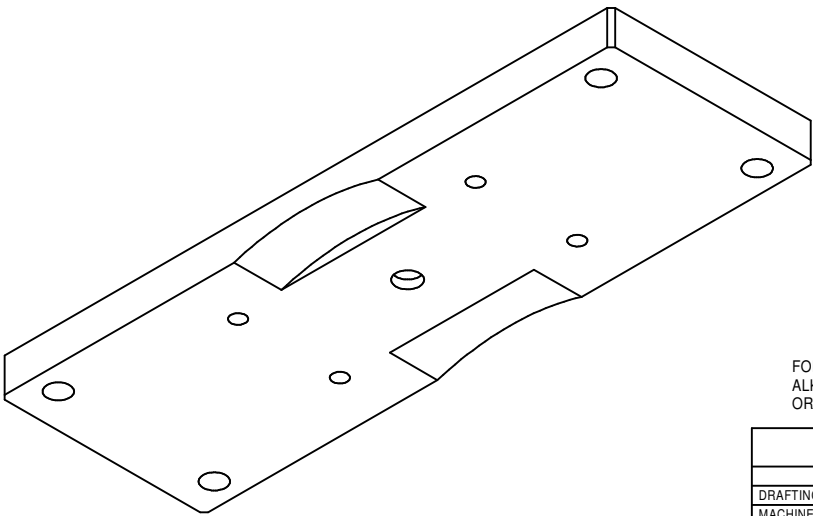
53 GATE VALVE TOP PLATE
FILE NAME: 7110-008
SHEET NO.: 10
DFT. SCALE: 1:1
MATERIAL: 1/2" 304L STAINLESS STEEL SHEET
QTY: 2 PER CRYOMODULE
NOTES:



54 CLAMP ROD 2
FILE NAME: 7110-008
SHEET NO.: 10
DFT. SCALE: 1:1
MATERIAL: 5/16-24 304L STAINLESS STEEL THREADED ROD
QTY: 8 PER CRYOMODULE
NOTES:



55 SPACER
FILE NAME: 7110-008
SHEET NO.: 10
DFT. SCALE: 1:1
MATERIAL: 304L STAINLESS STEEL
QTY: 2 PER CRYOMODULE
NOTES:



FOR MACHINING LUBRICANT USE ONLY
ALKALINE DETERGENT LUBRICANT CIMSTAR 40
OR EQUIVALENT APPROVED BY CORNELL LEPP

TECHNICAL RESOURCE APPROVALS REQUIRED BEFORE FABRICATION			
	OK	DATE	N/A
DRAFTING (O'Connel):			
MACHINE SHOP (Kaminski):			
CHEMISTRY (Conklin):			
ELECTRONICS SHOP (Barley):			
FURNACE BRAZING (Sherwood):			
BEAM WELDING (Sears):			
WELDING OTHER (Gallagher):			
UTILITIES INTEGRATION (Gallagher):			
STOCKROOMS (Lockwood):			

ITEM	DWG. NO.	DESCRIPTION	G1	G2	G3	REMARKS	REV.
PRINT DISTR.		PLOT DATE: 1/8/2008 CAD FILE NAME: 7110-008.idw					
CR-1		UNLESS OTHERWISE SPECIFIED: DIMENSIONS ARE IN INCHES: TOLERANCES ON: .00 ± .010 .000 ± .005 FRACTIONS ± 1/64 ANGLES ± 0.5° ALL SURFACES					
SH. NO. 10 OF 10		CORNELL UNIVERSITY FLOYD R. NEWMAN LABORATORY ITHACA, NY 14853					
REV. A		ERL HORIZONTAL TEST CRYOMODULE GATE VALVE AT BEAM EXIT GATE VALVE TOP PLATE; CLAMP ROD 2; SPACER					
CHECKED BY: V.M. APPROVED BY: T.I.O.		DRAWN BY: JGL DRAWN FOR: M.Liepe DATE: 5/29/2007 SCALE: D 7110-008 SH. NO. 10 OF 10					